



Berkshire Environmental Services & Technology, LLC

Statement of Qualifications

Corporate Headquarters

214 East Elm Street

P.O. Box 1976

Torrington, Connecticut 06790

Phone: (860) 482-6399

Fax: (860) 482-1833

www.best-env.com

Table of Contents

1.0	INTRODUCTION AND CORPORATE PROFILE	1
2.0	SERVICE AREAS	2
2.1	Environmental Risk and Property Transfer Assessment	2
2.2	Site Investigation and Sampling	2
2.3	Geoprobe® Services	3
2.4	Remedial Design and Engineering	3
2.5	Remediation System Installation	4
2.6	Remediation System Operation and Maintenance	4
2.7	Management of Contaminated Media	4
2.8	Underground Storage Tank Services	5
2.9	Subsurface Injection	5
2.10	Regulatory Assistance	5
2.11	Third-Party Review	5
3.0	PROFESSIONAL RESUMES	6

APPENDICES

- Appendix A – Project Profiles
- Appendix B – Small Business Enterprise Certificate
- Appendix C – Certificate of Insurance

1.0 INTRODUCTION AND CORPORATE PROFILE

Founded in late 2004, Berkshire Environmental Services & Technology, LLC (Berkshire) is a full-service environmental consulting and remediation firm. Berkshire was founded on the principles of quality, service, honesty, and integrity. The principals and staff of Berkshire are committed to delivering exceptional service to its clients based on the following:

- a thorough evaluation of the specific needs and goals of the client
- open and frequent communication with the client
- an understanding of the environmental liabilities and risks
- the regulatory frame-work in which the project falls
- a complete review of all available and applicable options
- fair and competitive pricing for services

Using these principles, Berkshire is able to provide environmental solutions to its clients based on their individual needs and requirements.

Quality control of all deliverables is of utmost importance. All bid documents, proposals, and reports are reviewed by senior staff prior to delivery to the client in order to assure consistent high standards of quality. All vendors and subcontractors of Berkshire, including analytical laboratories, materials suppliers, drilling contractors, and excavation contractors, are required to be committed to the same high level of quality control. Additionally, Berkshire is certified as a Small Business Enterprise by the State of Connecticut Department of Administrative Services Supplier Diversity Program.

Berkshire's staff of environmental scientists, hydrogeologists, and field technicians are available to provide rapid, personalized service related to site investigation and characterization, soil and groundwater remediation, and regulatory matters. With headquarters located in the Litchfield Hills of Connecticut, Berkshire is positioned to respond to clients throughout Connecticut, Massachusetts, and eastern New York (including Long Island). Berkshire has performed projects throughout Connecticut, Massachusetts, New York City, Long Island, and Westchester, Putnam, and Dutchess Counties of New York, as well as at overseas locations including France and Oman.

Berkshire maintains full professional insurance coverage. This coverage includes \$2,000,000 in general liability coverage (including bodily and property damage), \$2,000,000 (occurrence and aggregate) in environmental impairment liability and contractor's pollution liability coverage, \$1,000,000 in comprehensive automobile liability coverage, and the statutory limits and benefits for worker's compensation plus \$500,000 in employer's liability coverage.

All of Berkshire's employees and subcontractors have completed OSHA 40-Hour Health and Safety Training Course for Hazardous Waste Operations and Refreshers in accordance with CFR 1910.120. All activities are performed in accordance with Berkshire's corporate health and safety manual and standard operating procedures (SOPs).

2.0 SERVICE AREAS

Berkshire provides environmental services to industrial clients, commercial property owners, municipalities, attorneys, commercial lending institutions, bulk and retail petroleum facility owners, residential homeowners, residential and commercial realtors, general and excavating contractors, and other environmental service providers.

Service areas include, but are not limited to:

- Environmental risk and property transfer assessment
- Site investigation and sampling
- Geoprobe® services
- Remedial design and engineering
- Remediation system installation
- Remediation system operation and maintenance (O&M)
- Management of contaminated media
- Underground storage tank services
- Subsurface injection
- Regulatory assistance
- Third-party review

2.1 Environmental Risk and Property Transfer Assessment

The sale or purchase of commercial or industrial properties typically requires an understanding of potential environmental risks associated with the parcel. Obtaining state and federal redevelopment grants, such as community block grants and HUD grants, can also require an assessment of the environmental risks specific to the particular parcels of land. Berkshire can guide buyers, sellers, and owners of commercial real estate through the process of understanding the environmental risks and liabilities associated with such parcels as well as potential regulatory requirements. These services include Phase I Environmental Site Assessments and Environmental Transaction Screens conducted in accordance with ASTM standard 1527-13 and 1528-14 and the Connecticut Department of Energy & Environmental Protection (CT DEEP) Site Characterization Guidance Document.

The applicability of environmental statutes such as the Connecticut Transfer Act are often viewed as an obstacle to the transfer of certain commercial and industrial parcels. Berkshire can assist sellers and buyers with the completion of required Transfer Act submittals as well as assisting the parties in understanding and working through the requirements of the Transfer Act in order to allow the transaction to proceed.

2.2 Site Investigation and Sampling

A complete understanding of the environmental risks associated with a parcel of land is often based on collection and laboratory analysis of soil and groundwater samples. Berkshire's environmental

professionals can design site-specific work scopes for the collection of soil and groundwater samples from parcels. Site investigation procedures are used to identify and confirm property impacts as well as to define the degree and extent of impacts. Investigation activities are designed based on an understanding of the areas of environmental concern (AECs) and various regulatory guidance documents and regulations, including the Connecticut Department of Energy & Environmental Protection (CT DEEP) Remediation Standard Regulations (RSRs), the CT DEEP Site Characterization Guidance Document, and the Massachusetts Contingency Plan (MCP).

Investigation techniques used by Berkshire to investigate and identify contaminant source areas include soil vapor surveys, soil and groundwater sampling via soil borings using direct-push technology, and the installation of permanent groundwater monitoring wells via conventional drilling techniques. Potential impacts to indoor air quality that may result from subsurface impacts are evaluated through soil vapor and indoor air quality sampling. The distribution of contaminants on a site is understood through an evaluation of sampling data, mapping of groundwater flow, and an understanding of contaminant degradation and migration pathways.

All sampling is conducted using methodology recommended and approved by regulatory agencies as well as Berkshire's Standard Operating Procedures (SOPs) and the CT DEEP Guidance for Collecting and Preserving Soil and Sediment Samples for Laboratory Determination of Volatile Organic Compounds. All soil, groundwater, and air samples collected by Berkshire are submitted to state-certified environmental laboratories that must meet rigid quality assurance (QA) and quality control (QC) measures, including the CT DEEP Reasonable Confidence Protocols (RCPs).

Site investigation activities performed by Berkshire also include remedial pilot testing to evaluate the potential effectiveness of various remedial technologies, including aquifer pump testing, air sparge testing, and soil vapor extraction testing.

2.3 Geoprobe® Services

Berkshire provides direct-push soil boring services using company-owned Geoprobe® equipment. The use of company-owned equipment eliminates the need to subcontract for many site investigation activities.

Geoprobe® services performed by Berkshire include soil and groundwater sample collection, installation of temporary or permanent narrow-diameter groundwater monitoring wells, soil vapor point installation, air sparge well installation, and installation of points for direct injection of chemical oxidation or bioenhancement agents.

2.4 Remedial Design and Engineering

Using data acquired from site investigations as well as an understanding of the property uses, client requirements, and any applicable regulatory requirements, Berkshire personnel can evaluate site data to determine the most effective means of remediation for a specific site. Remedial technologies are employed for contaminant capture, contaminant removal, and contaminant migration control in order to achieve concentrations of contaminants of concern that are below regulatory limits.

Based on a detailed analysis of the contaminant source and plume areas, available remedial technologies, and a cost-benefit analysis, Berkshire can design remedial programs that are specific to each site. Remedial options evaluated by Berkshire include soil excavation and disposal, recovery of free-phase product, traditional groundwater pump and treat, vacuum-enhanced pump and treat, dual-phase extraction, air sparging, and soil vapor extraction as well as the use of chemical or biological surfactants and additives.

2.5 Remediation System Installation

Berkshire can coordinate and conduct all facets of remediation system installation activities. This includes the acquisition of all necessary local and state permits for construction and any proposed regulated discharges, the installation of needed wells and subsurface piping, and the installation of system components such as air strippers, regenerative blowers, air compressors, and carbon treatment units as turnkey site-specific systems.

Berkshire can also install dewatering systems designed to remove contaminated groundwater at construction projects. These systems include all pumps, hoses, frac tanks, and treatment equipment necessary to reduce contaminant concentrations to levels below discharge limits. The systems can be set-up to discharge treated water to surface discharge points or to sanitary sewer systems. As part of the process, Berkshire can prepare all necessary submittals required to obtain necessary discharge permits.

2.6 Remediation System Operation and Maintenance

Berkshire can perform all routine and non-routine operation and maintenance (O&M) tasks associated with the operation of in-situ soil and groundwater remediation systems. These tasks include the monitoring of system performance, making adjustments and repairs as needed to optimize system performance, the collection of air and water discharge samples in accordance with regulatory discharge permits, and the collection of routine groundwater samples. Berkshire can also perform change-outs of liquid and vapor-phase carbon and coordinate for the proper disposal of spent carbon.

2.7 Management of Contaminated Media

Using well-established relationships with disposal facilities and waste brokers, Berkshire can coordinate for the excavation, transportation, and disposal of all types of contaminated media, including hazardous and non-hazardous wastes. Berkshire personnel have completed training in Hazardous Materials Regulations as per 49 CFR part 172 and Berkshire is registered with the U.S. Department of Transportation as required by 49 CFR part 107, Subpart G. Excavation services include not only the physical removal of the material, but oversight to assure proper removal as well as the collection of closure samples to confirm that all impacted material requiring removal has been successfully removed. Disposal is coordinated with facilities having valid state and federal permits for the acceptance of the specific waste stream. Disposal coordination includes transportation management and scheduling as well as tracking and reconciliation of all disposal documentation.

2.8 Underground Storage Tank Services

Berkshire can coordinate, schedule, and direct all aspects of underground storage tank (UST) removal at residential, commercial, and industrial sites. These services include the excavation and disposal of the tanks, residual liquid products, and contaminated soil, as well as site restoration. Berkshire can also collect soil samples as needed for analysis using field-screening techniques (including use of a photoionization detector (PID) and / PetroFlag portable TPH analyzer) and for analysis by certified laboratories to document proper closure in accordance with regulatory closure requirements, including completion of required UST registration forms.

Berkshire can also provide oversight and consulting services to contractors performing UST removal activities. These services include advising contractors on soil excavation and other remedial strategies at sites where releases from USTs have occurred as well as assisting contractors with the proper collection and analysis of closure soil samples. Berkshire can also assist and coordinate all facets of contaminated soil transportation and disposal.

2.9 Subsurface Injection

Berkshire can coordinate and conduct all facets of subsurface injections of chemical oxidation and bioenhancement agents and other proprietary media for the purpose of in-situ soil and groundwater remediation. This includes acquisition of all necessary local and state permits, installation of subsurface injection points, and acquisition of injection media.

2.10 Regulatory Assistance

Berkshire is available to provide assistance to clients with understanding the numerous environmental regulations and permits that pertain to commercial and industrial sites. These services include working with clients to obtain necessary environmental permits for industrial processes and discharges, understanding the Connecticut Transfer Act, and representing clients faced with Administrative or Consent Orders. Berkshire fosters a relationship between the client and the regulators to achieve a common goal of regulatory compliance.

2.11 Third-Party Review

Berkshire can provide third-party review services related to environmental assessments conducted on sites by others. Berkshire can also provide second opinions relative to remedial recommendations and strategies.

Profiles of representative projects in which Berkshire's environmental professionals have conducted, managed, and coordinated are included in Appendix A.

3.0 PROFESSIONAL RESUMES

Berkshire employs highly qualified and experienced environmental professionals who are committed to providing quality, knowledgeable, and personalized service to our clients. The Berkshire staff, which includes a Connecticut Licensed Environmental Professional (LEP), stays up-to-date with changes to the environmental industry through attendance at professional seminars and conferences and membership in professional organizations such as Environmental Professionals Organization of Connecticut (EPOC). The professionals at Berkshire continually monitor changes to environmental regulations, changes to the regulatory climate, changes and advancement in site investigation and remediation technology, and changes within the environmental consulting and remediation industry itself. Berkshire staff also monitors changes to the overall business climate in order to adapt our services to the needs of the clients we serve.

The following pages contain resumes for the staff of environmental professionals at Berkshire.

James W. Ciaglo III, LEP
Senior Project Manager

Mr. Ciaglo, a Connecticut Licensed Environmental Professional (LEP), has over 20 years of experience as an environmental consultant performing environmental site assessment, subsurface investigation, and remedial investigation/design activities for numerous commercial clients. Project experience includes the preparation, implementation, and management of environmental assessments, remedial investigations, and remedial action plans. Project management responsibilities include serving as liaison between clients, attorneys, and regulatory agencies and the preparation of comprehensive environmental assessment and remedial investigation reports, and management of the implementation of remedial action plans. He has served as an expert witness, testifying before the court on behalf of clients in civil claims, and has negotiated Consent Orders with regulatory agencies on behalf of clients.

Mr. Ciaglo has been directly involved in environmental site assessments of over 500 sites throughout the northeast. Mr. Ciaglo's area of expertise is in the assessment and investigation of environmental issues pertaining to the transfer of real estate and assessing the applicability of the Connecticut Transfer Act. Mr. Ciaglo has conducted and managed environmental assessments of residential, commercial, and industrial properties, including retail gasoline station facilities, bulk petroleum storage facilities, and manufacturing facilities. Mr. Ciaglo has also managed and directed environmental assessments on real estate portfolios.

In addition, Mr. Ciaglo has been involved in the design, implementation and management of numerous soil and groundwater remediation projects. These sites include those with gasoline, heating fuel, and chlorinated solvent impacts. Other sites Mr. Ciaglo has managed include those with third party impacts, including impacts to potable wells. Mr. Ciaglo coordinated, managed, and directed the extension of public water to nine homes with wells impacted from a gasoline release on a client's site, and on another site, designed and implemented a groundwater remediation program that extended onto land of an adjoining property owner.

Mr. Ciaglo also has extensive experience in underground storage tank (UST) removal and leaking UST issues. He has worked with the Connecticut Underground Storage Tank Petroleum Clean-Up Fund on behalf of clients seeking reimbursement for site investigation and remediation activities.

Professional Credentials

- Connecticut Licensed Environmental Professional (#394)
- OSHA 40-Hour Health and Safety Training Course for Hazardous Waste Operations and Refreshers
- Confined Space Training
- Naval Facilities Engineering Command, Construction Quality Management for Contractors
- Member, Environmental Professionals Organization of Connecticut (EPOC)

Education

- M.S., Environmental Science – University of New Haven, 1999
- B.S., Biology – Bates College, 1989

Matthew P. Prelli
Principal / Project Manager

Mr. Prelli has over 20 years of experience in the environmental industry. In addition to his responsibilities as a principal in the company, his responsibilities include interpretation of all aspects of remedial investigations and subsequent remedial actions. In addition, he is responsible for coordinating field activities, pilot test studies, soil, groundwater and air sampling, quality assurance, data interpretation, report preparation and permitting. Mr. Prelli has also designed and implemented a database system to track the efficiency and performance of active remediation systems

Mr. Prelli has conducted site investigations and installed over 50 remediation systems at industrial and commercial sites along the eastern seaboard of the United States, from Maine to Florida. He has been involved with implementing remediation strategies for the treatment of gasoline, #2 & #6 heating oil, jet fuel, chlorinated solvents and heavy metal contamination. He has also managed and coordinated all aspects of large-scale, long-term contaminated soil excavation and disposal projects for private and municipal clients, including projects in excess of 40,000 tons.

In addition, Mr. Prelli has designed and installed several remediation systems utilizing soil vapor extraction, air sparging, catalytic oxidation, bio-remediation, in-situ chemical oxidation, dual-phase high vacuum, and traditional and vacuum enhanced pump and treat techniques.

Mr. Prelli provided oversight and quality control for chemical and biotic water quality sampling for Marine Systems Laboratory, Smithsonian Institution. He also coordinated field activities during all phases of a lake restoration project.

Mr. Prelli has also served as the project manager at a US EPA Region II Superfund Remediation Site. Mr. Prelli was responsible for all aspects associated with the project including, but not limited to, day to day operation of the treatment plant, sample collection, data evaluation, quality assurance control procedures, permitting, and reporting.

Mr. Prelli was the field team leader for the remedial investigation at the former fueling facility at Hanscom Air Force Base in Bedford, Massachusetts, which was directly overseen by the US EPA. Activities included: characterization of site geology for geologic cross-sections; groundwater contour mapping; monitoring well and piezometer installation; soil gas survey delineation; groundwater monitoring and sampling; surface water, sediment and soil sampling; and technical report preparation.

Professional Credentials & Specialized Training

- Connecticut Licensed Well Driller #WND.0000209-W4
- OSHA 40-Hour Health and Safety Training Course for Hazardous Waste Operations
- OSHA Haz-Mat Incident Response Operations, First Responder Operations Level
- 49 CFR 172 – Hazardous Materials Regulations & Transportation
- MA DEP Delineating Bordering Vegetating Wetlands Workshop
- MA DEP 401 Water Quality Certification Workshop
- Air-Based In Situ and groundwater remediation, University of Wisconsin
- ASTM Groundwater Monitoring and Sampling Course, Philadelphia, PA
- Operation of Nuclear Density Equipment NUREG 1556 Volume 1, Appendix D

Education

- B.S., Environmental Health and Technology – Biology, Springfield College, 1992

Francis G. Wright
Principal / Geologist

Mr. Wright has over 20 years of experience in specialized field operations, including 4 years of subsurface geophysical data acquisition in mobile oil and gas exploration field camps in the Alaskan arctic and western United States. Mr. Wright has over 17 years of field experience in hydrogeological investigations and groundwater and subsurface soil contamination studies. In addition to his responsibilities as a principal in the company, he has been responsible for management of all types of environmental projects, soil and groundwater sample data interpretation, supervision of field activities, environmental site assessments and correspondence with the regulatory agencies.

Mr. Wright has been engaged in project management, field work, and report writing for environmental site investigations, landfill monitoring, Superfund facilities, and leaking underground storage tanks. Mr. Wright has led field activities at sites throughout Connecticut, New York and Massachusetts, in addition to high profile projects in the Bahamas and New Jersey. He has also been involved in numerous residential and commercial projects, directing remedial activities including soil excavation, plume delineation, and closure sample collection. Additional field experience includes supervision and installation of groundwater monitoring wells, soil and groundwater sample collection, and surveying.

Mr. Wright has prepared permits for subsurface chemical injections, groundwater treatment discharge, and solid waste facility operations. Mr. Wright has also prepared reimbursement applications for submission to the Underground Storage Tank Petroleum Clean-up Program managed by the State of Connecticut Department of Energy & Environmental Protection.

He is knowledgeable about the State of Connecticut Remediation Standard Regulations (RSRs), the Connecticut Property Transfer Act, and Federal Hazardous Waste Regulations (RCRA).

Professional Credentials & Training

- OSHA 40-Hour Health and Safety Training Course for Hazardous Waste Operations and Refreshers
- OSHA Haz-Mat Incident Response Operations, First Responder Operations Level
- 49CFR 172 DOT Transportation of Hazardous Materials
- Operation of Nuclear Density Equipment NUREG 1556 Volume 1, Appendix D
- ExxonMobil Loss Prevention System Training
- Associate Member, Environmental Professionals Organization of Connecticut (EPOC)

Education

- B.A., Geology - State University of New York at Potsdam, 1996.

William P. Douglas
Senior Project Manager

Mr. Douglas has over 20 years of field experience in the environmental consulting industry. His responsibilities include project management, project estimating, permitting, quarterly and annual report preparation, management and implementation of field operations, health and safety implementation, remediation system design, installation, and O&M.

Mr. Douglas has been responsible for all aspects of environmental projects throughout the eastern United States. Management responsibilities have included design and implementation of subsurface remediation systems and soil excavation projects, acquisition of all applicable environmental, local, and Federal permits, Health and Safety Plan preparation, groundwater monitoring and soil sampling programs. Field responsibilities have included soil and groundwater sample collection and heavy equipment operation to facilitate remediation projects.

Mr. Douglas has been involved with specialized projects including installation and operation of catalytic oxidizer systems, operation of a mobile remediation recovery water treatment unit for use at petroleum spill sites, and operation of an emergency response mobile treatment laboratory.

Mr. Douglas has experience working with the State of Connecticut Remediation Standard Regulations (RSRs), the Connecticut Property Transfer Act, and Federal Hazardous Waste Regulations (RCRA).

Professional Credentials & Training

OSHA 40-Hour Health and Safety Training Course for Hazardous Waste
Operations and Refreshers
OSHA 28-Hour Permit Required Confined Space Entry Training
OSHA Competent Site Personnel Training
State of Massachusetts Hoisting Engineers License

Education

B.S. / B.A., Finance - Accounting, Nichols College, 1980

Paul Roche
Project Manager

Mr. Roche has over 20 years of experience as an environmental consultant performing environmental site assessments, subsurface investigations, and remedial investigation activities for residential, commercial, and industrial sites. Mr. Roche has conducted and overseen many projects from the assessment phase to the remediation phase, designing Phase II and Phase III investigations to address areas of concern identified during Phase I assessments, developing strategies to address releases that require remediation and / or institutional and engineered controls, and conducting post-remediation groundwater monitoring to bring such projects to final completion. Mr. Roche has also conducted UST closure projects, and investigation activities and remediation measures associated with UST releases. Mr. Roche has prepared numerous comprehensive environmental assessment and investigation reports, remedial action plans, remediation system operations and maintenance reports, final remedial action reports, UST closure reports, and post-remediation groundwater monitoring plans and reports.

Mr. Roche has been directly involved in the environmental assessment of over 400 sites, and has conducted over 200 environmental investigations. Mr. Roche has conducted dozens of UST closure projects, remediation projects, and post-remediation groundwater monitoring projects. Mr. Roche is intimately familiar with Connecticut laws, regulations, and guidance documents, including the Connecticut Transfer Act, the Transfer Act Site Assessment Guidance Document, the Remediation Standard Regulations, and the Site Characterization Guidance Document, as well as American Society for Testing and Materials standards for environmental assessment and investigation activities. Mr. Roche has also been responsible for QA/QC analysis of laboratory analytical data relative to Connecticut Recommended Reasonable Confidence Protocols.

Project management responsibilities have included the development of technical cost proposals, project budget and progress tracking and management, and interaction with clients, attorneys, regulatory authorities, and third parties. Mr. Roche managed a team of personnel responsible for environmental assessments and investigations. Mr. Roche also conducted portfolio management as a consultant for a major petroleum company for seven years, which included all aspects of management for numerous specific retail gasoline stations, including progress assessments of remediation systems and post-remediation groundwater monitoring activities in relation to closure goals, and cost benefit analysis and implementation of additional measures when needed.

Professional Credentials

OSHA 40-Hour Health and Safety Training Course for Hazardous Waste Operations
OSHA Competent Site Personnel Training
49 CFR 172 – Hazardous Materials Regulations & Transportation

Education

M.S., Environmental Engineering – University of New Haven, 1998
B.S., Chemical-Materials Engineering – University of Connecticut, 1987

APPENDIX A

Project Profiles



**Phase I
Site Assessment**

Client: Confidential	Location: Waterbury, CT
Project Value: \$2,000	Project Status: Completed On Time & On Budget

Phase I Site Assessment

Berkshire was retained to perform a Phase I Site Assessment on an abandoned industrial complex. This site consisted of two parcels of land with four separate buildings. The Phase I was completed in accordance with ASTM standard E 1527-00 and the CT DEEP Transfer Act Assessment Guidance Document.

On behalf of this customer Berkshire has performed the following tasks:

- Site Reconnaissance
- Regulatory Record Reviews
- Local Records Review
- Historical Interviews



**Phase I
Site Assessment**

Client: Confidential	Location: Waterbury, CT
Project Value: \$2,000	Project Status: Completed On Time & On Budget

Phase I Site Assessment

Berkshire was retained to perform a Phase I Site Assessment. This site consisted of an active industrial facility that manufactured plastic coatings. The Phase I was completed in accordance with ASTM standard E 1527-05 and the CT DEEP Site Characterization Guidance Document.

On behalf of this customer Berkshire has performed the following tasks:

- Site Reconnaissance
- Regulatory Record Reviews
- Local Records Review
- Historical Interviews



**Phase I
Site Assessment**

Client: Confidential	Location: Millerton, NY
Project Value: \$2,500	Project Status: Completed On Time & On Budget

Phase I Site Assessment

Berkshire was retained to perform a Phase I Site Assessment. This active dairy farm consisted of multiple parcels totaling over 300 acres. The Phase I was completed in accordance with ASTM standard E 1527-00.

On behalf of this customer Berkshire has performed the following tasks:

- Site Reconnaissance
- Regulatory Record Reviews
- Local Records Review
- Historical Interviews



**Phase I
Site Assessment**

Client: Confidential	Location: Amenia, NY
Project Value: \$2,500	Project Status: Completed On Time & On Budget

Phase I Site Assessment

Berkshire was retained to perform a Phase I Site Assessment. This active horse farm consisted of two parcels of land totaling over 275 acres. The Phase I was completed in accordance with ASTM standard E 1527-00.

On behalf of this customer Berkshire has performed the following tasks:

- Site Reconnaissance
- Regulatory Record Reviews
- Local Records Review
- Historical Interviews



**Phase I / Phase II
Site Assessment**

Client: Confidential	Location: Salisbury, CT
Project Value: \$30,300	Project Status: Completed On Time & On Budget

Phase I / Phase II Site Assessment

Berkshire was retained to perform a Phase I and Phase II Site Assessments at a former municipal solid waste disposal area. The Phase II Assessment included installation of a permanent groundwater monitoring well network to evaluate the current groundwater quality at the Site.

On behalf of this customer Berkshire has performed the following tasks:

- Site Reconnaissance
- Regulatory Record Reviews
- Soil and Groundwater Sample Collection and Analyses
- Final Report Preparation



**Phase II Site
Assessment /
Consulting**

Client: Confidential	Location: Private School, Confidential Location
Project Value: \$33,000	Project Status: On-going

Phase II Site Assessment / Consulting

Berkshire was retained to evaluate the status of historical petroleum releases from former underground storage tanks and historic maintenance facility operations. The Phase II investigation includes collection of soil and groundwater samples and installation of permanent groundwater monitoring wells.

On behalf of this customer Berkshire has performed the following tasks:

- Environmental Report Review
- Above Ground Storage Tank Closure
- Soil and Groundwater Sample Collection and Analyses
- Report Preparation and On-going Consulting



**Phase I / Phase II
Site Assessment**

Client: Confidential	Location: White Plains, NY
Project Value: \$54,235	Project Status: Completed On Time & On Budget

Phase I / Phase II Site Assessment

Berkshire was retained to perform a Phase I and Phase II Site Assessments at an active lumber yard complex. This site consisted of four parcels of land with five separate buildings. The Phase II Assessment included the completion of 36 soil borings and the collection and laboratory analysis of 71 soil and 16 groundwater samples from temporary and permanent groundwater monitoring wells installed both on and off the site.

On behalf of this customer Berkshire has performed the following tasks:

- Site Reconnaissance
- Regulatory Record Reviews
- Soil and Groundwater Sample Collection and Analyses
- Final Report Preparation



**Transfer Act
Consulting / LEP
Verification**

Client: Confidential	Location: Newtown, CT
Project Value: \$8,000	Project Status: Completed On Time & On Budget

Transfer Act Consulting / LEP Verification

Berkshire was retained to evaluate the status of an industrial property relative to the Connecticut Transfer Act and provide a Verification of Compliance with the Connecticut Remediation Standard Regulations. The verification received a "no audit" letter from the CT DEEP.

On behalf of this customer Berkshire has performed the following tasks:

- Hazardous Waste Generation Review
- Hazardous Waste Manifest Review
- Data and Compliance Review
- Compliance Verification



Storm Water Sampling

Client: Municipality	Location: Manchester, CT
Project Value: \$1,500	Project Status: Completed On Time & On Budget

Storm Water Sampling

Berkshire was retained by the city of Manchester, CT to obtain storm water samples review, analytical results and complete required regulatory filings associated with a storm water general permit.

On behalf of this customer Berkshire has performed the following tasks:

- Develop a Site Specific Health & Safety Plan
- Collect Stormwater Samples
- Review Analytical Results
- Complete & File Reports



Storm Water Sampling

Client: Municipality	Location: Newington, CT
Project Value: \$1,500	Project Status: Completed On Time & On Budget

Storm Water Sampling

Berkshire was retained by the city of Newington, CT to obtain storm water samples review, analytical results and complete required regulatory filings associated with a storm water general permit.

On behalf of this customer Berkshire has performed the following tasks:

- Develop a Site Specific Health & Safety Plan
- Collect Stormwater Samples
- Deliver Samples to Laboratory
- Review Analytical Results
- Complete & File Reports



**Direct Push
Environmental
Drilling Services**

Client: Confidential	Location: Nantucket, Massachusetts
Project Value: \$16,000	Project Status: Completed On Time & On Budget

Direct Push - Environmental Drilling Services

Berkshire was retained to install fourteen (14) thirty-foot deep injection wells as part of a rainwater re-injection system.

On behalf of this customer Berkshire has performed the following tasks:

- Obtain Utility Clearance
- Collect & Preserve Soil & Groundwater Samples
- Installed Injection Wells
- Survey and Record Injection Well Network Coordinates
- Develop Site Specific Health & Safety Plan



**Direct Push
Environmental
Drilling Services**

Client: Confidential	Location: Connecticut
Project Value: \$2,600	Project Status: Completed On Time & On Budget

Direct Push - Environmental Drilling Services

Berkshire was retained to collect soil and groundwater samples as a part of a Phase II Environmental Investigation at this active gasoline and vehicle repair facility.

On behalf of this customer Berkshire has performed the following tasks:

- Cleared Utilities
- Install Temporary Monitoring Wells
- Collect and Preserve Soil & Groundwater Samples
- Site Restoration Services



**Direct Push
Environmental
Drilling Services**

Client: Confidential	Location: Connecticut
Project Value: \$2,000	Project Status: Completed On Time & On Budget

Direct Push - Environmental Drilling Services

Berkshire was retained to collect soil and groundwater samples as part of a Phase II Environmental Investigation.

On behalf of this customer Berkshire has performed the following tasks:

- Obtain Utility Clearance
- Collect & Preserve Discrete Soil Samples
- Install Temporary Monitoring Wells
- Collect Groundwater Samples
- Develop Site Specific Health & Safety Plan



**Manual Soil
Sample Collection
In A Residential
Basement**

Client: Confidential	Location: Connecticut Residence
Project Value: \$2,600	Project Status: Completed On Time & On Budget

Manual Soil Sample Collection In A Residential Basement

Berkshire was retained to collect soil samples to delineate petroleum-impacts in a residential basement following a release of home heating oil.

On behalf of this customer Berkshire has performed the following tasks:

- Cleared Utilities
- Collect and Preserve Soil Samples
- Developed Site Specific Health & Safety Plan
- Site Restoration Services



**Direct Push
Environmental
Drilling Services**

Client: Confidential	Location: Connecticut
Project Value: \$4,000	Project Status: Completed On Time & On Budget

Direct Push - Environmental Drilling Services

Berkshire was retained to collect soil and groundwater samples as part of a soil disposal and groundwater treatment characterization investigation.

On behalf of this customer Berkshire has performed the following tasks:

- Obtain Utility Clearance
- Collect & Preserve Discrete Soil Samples
- Install a Temporary Monitoring Well
- Collect Groundwater Samples
- Develop Site Specific Health & Safety Plan



**Direct Push
Environmental
Drilling Services**

Client: Confidential	Location: Connecticut Residence
Project Value: \$2,600	Project Status: Completed On Time & On Budget

Direct Push - Environmental Drilling Services

Berkshire was retained to collect soil samples and delineate petroleum-impacts following a residential a release of home heating oil.

On behalf of this customer Berkshire has performed the following tasks:

- Cleared Utilities
- Collect and Preserve Soil Samples
- Developed Site Specific Health & Safety Plan
- Site Restoration Services



**Soil Vapor
Extraction System
Fabrication &
Installation**

Client: Confidential

Location: Greenwich, CT

Project Value: \$24,000

Project Status: Completed On Time & On Budget

Soil Vapor Extraction System Fabrication & Installation

Berkshire was retained to construct and install a soil vapor extraction system at this active dry cleaners located in southwestern Connecticut. All activities associated with the system installation were reimbursed by the CT Dry Cleaning Fund.

On behalf of this customer Berkshire has performed the following tasks:

- Environmental Drilling
- Obtain Local Permits
- Remediation System Fabrication & Installation
- Site Construction Services
- System Operation & Maintenance



**Free Product
Recovery
System Installation**

Client: Confidential

Location: Municipality, CT

Project Value: \$63,000

Project Status: Completed On Time & On Budget

Free Product Recovery System Installation

Berkshire was retained by a municipal school district to install a free product recovery system following the discovery of a #2 fuel oil release. The recovery system design and installation was conducted following emergency response actions headed by the CT DEEP.

On behalf of this customer Berkshire has performed the following tasks:

- Environmental Drilling
- Obtain Local Permits
- Site Construction Activities
- Design & Installation of Recovery System
- System Operation & Maintenance



**Groundwater
Extraction /
Recirculation
Treatment Facility
Operation &
Maintenance**

Client: Confidential	Location: Hicksville, NY.
----------------------	---------------------------

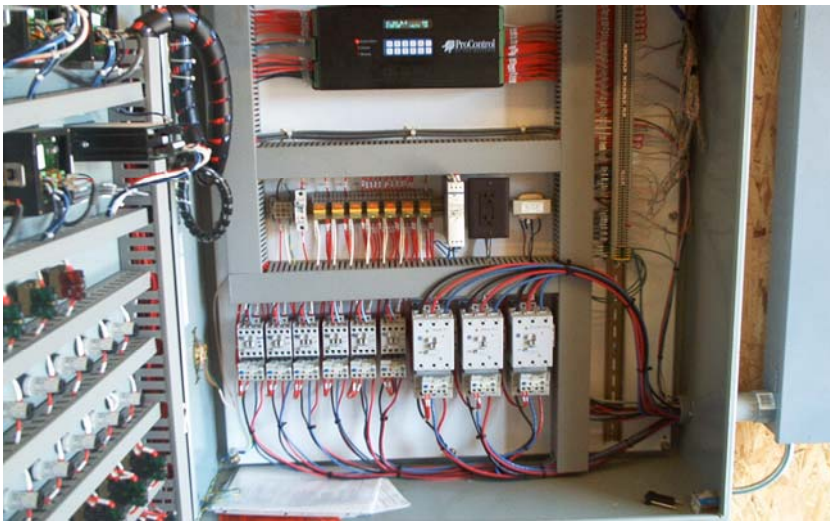
Project Value: \$150,000 Annually	Project Status: On-Going
-----------------------------------	--------------------------

Groundwater Extraction / Recirculation System - Treatment Facility Operation

Berkshire is currently operating a groundwater treatment and recirculation system. The remediation activities are being accomplished in cooperation with the NY DEC objectives.

On behalf of this customer Berkshire has performed the following tasks:

- Monitor & Optimize system performance.
- Troubleshoot & repair system components as needed.
- Collect air, groundwater & treatment system samples.
- Ensure target flow rate of three millions (3,000,000) gallon per month is achieved.



**Air Sparge / SVE
System
Design, Installation
and Operation
Retail Gasoline
Station**

Client: Confidential	Location: Guilford, CT
----------------------	------------------------

Project Value: \$83,000	Project Status: Completed On time & budget-On-going
-------------------------	---

Air Sparge / SVE System Design, Installation and Operation - Retail Gasoline Station

Berkshire was retained by the owner of this retail gasoline station design, install and operate an air sparge / SVE system. All activities associated with this project have been reimbursed by the CT LUST Reimbursement Fund.

On behalf of this customer Berkshire has performed the following tasks:

- Environmental Drilling
- Obtain Local Permits
- Site Construction Activities
- Collect system and groundwater samples to monitor system efficiency.
- Design & Installation of Recovery System.
- System Operation & Maintenance



**Soil Vapor
Extraction System**

Client: Confidential

Location: Long Island, NY

Project Value: \$24,000 - Annually

Project Status: On-going

Soil Vapor Extraction

Berkshire is currently operating a soil vapor extraction system at this industrial facility located in Long Island, NY. Berkshire is also responsible for sampling and hazardous waste compliance duties associated with this site.

On behalf of this customer Berkshire has performed the following tasks:

- Remediation System Installation
- Site Construction Services
- Coordinate Waste Compliance Services
- Site Sampling Services
- System Operation & Maintenance



**Proprietary
Media Injection
Services**

Client: Confidential

Location: Confidential Location

Project Value: \$79,000

Project Status: Completed On Time & On Budget

Proprietary Media Injection Services

Berkshire was retained to design, fabricate and install a proprietary media injection system in Massachusetts. The system was custom built for the subject location and is equipped with full remote telemetry to monitor the site conditions and operate the system's components.

On behalf of this customer Berkshire has performed the following tasks:

- Environmental Drilling
- Design the System
- Perform Site Construction Activities
- System Operation & Maintenance



High Vacuum Dual Phase Recovery

Client: Confidential

Location: Cheshire, CT

Project Value: \$24,000 - Annually

Project Status: On-going

High Vacuum Dual Phase Recovery

Berkshire was retained to retrofit and re-start an existing dual phase extraction recovery system at this industrial facility. Berkshire has also conducted additional investigation and sampling services at this site.

On behalf of this customer Berkshire has performed the following tasks:

- Retrofit & Repair Existing System
- Sample Collection
- Develop Site Specific Health & Safety Plan
- System Operation & Maintenance



Site Remediation Facility Monitoring & Sampling

Client: Confidential

Location: Canaan, CT

Project Value: \$99,000

Project Status: Completed On Time & Budget-On-going

Site Remediation - Facility Monitoring & Sampling

Berkshire was retained by the owner of this bulk oil storage facility following receipt of a consent order from the Attorney General's office. Berkshire identified the degree & extent of the subsurface impacts and coordinated the excavation and disposal of impacted-soil.

On behalf of this customer Berkshire has performed the following tasks:

- Environmental Drilling
- Obtain Local Permits
- Perform Groundwater & Storm water Sampling
- Coordinate Soil Excavation & Disposal
- Interaction with Regulatory Agencies



**Construction
Dewatering
Heavy Metal /
Ion Exchange**

Client: Confidential	Location: Danbury, CT
Project Value: \$125,000	Project Status: Completed On Time & On Budget

Construction Dewatering & Groundwater Treatment

Berkshire was retained design and implement a groundwater dewatering and treatment system to facilitate the construction of a municipal police station. The groundwater contaminants included VOCs, PAHs and metals, with particular attention to mercury.

On behalf of this customer Berkshire has performed the following tasks:

- Treatment System Design
- Obtain Local Permits
- Install Remote Telemetry for Alarm Conditions as a Cost Saving Measure
- Site Construction Services
- System Operation & Maintenance



**Groundwater
Treatment System
Discharge
Sampling**

Client: Confidential	Location: Southington, CT
Project Value: \$63,000	Project Status: Completed On Time & On Budget

Groundwater Treatment - Discharge Sampling

Berkshire was retained by an Industrial client to treat groundwater during well development activities. Berkshire obtained all local permits and designed the treatment system. Additionally, Berkshire conducted all sampling and reporting activities associated with the CT DEEP Discharge Permit.

On behalf of this customer Berkshire has performed the following tasks:

- Calculate Constituent Loads and Design Treatment Process
- Obtain Local Permits
- Site Construction Activities
- Performed all Sampling and Reporting Requirements
- System Operation & Maintenance



**Soil Excavation,
Transportation
& Disposal**

Client: City of Danbury	Location: Main Street, Danbury, CT
Project Value: \$1,750,000	Project Status: Completed On Time & On Budget

Soil Excavation, Transportation & Disposal

Berkshire was retained to coordinate the excavation, transportation & disposal of over 30,000 tons of urban fill and CT-regulated soil in order to facilitate the construction of a new municipal facility.

On behalf of this customer Berkshire has performed the following tasks:

- Develop a Site Specific Health & Safety Plan
- Collect Characterization Samples, Review & Interpret Results
- Coordinate Transportation & Disposal Services
- Compile Disposal Reconciliation Logs



**Soil Excavation,
Transportation
& Disposal**

Client: Confidential	Location: Bridgeport, CT
Project Value: \$750,000	Project Status: Completed On Time & On Budget

Soil Excavation, Transportation & Disposal

Berkshire was retained to coordinate the excavation, transportation & disposal of urban fill and CT-regulated soil in order to facilitate the construction of a new elderly housing facility.

On behalf of this customer Berkshire has performed the following tasks:

- Develop a Site Specific Health & Safety Plan
- Collect Characterization Samples, Review & Interpret Results
- Coordinate Transportation & Disposal Services
- Coordinate UST Removal and Sampling Activities
- Compile Disposal Reconciliation Logs



**Soil Excavation,
Transportation
& Disposal**

Client: Confidential	Location: Science Park, New Haven, CT
Project Value: \$2,475,000	Project Status: Completed On Time & On Budget

Soil Excavation, Transportation & Disposal

Berkshire was retained to coordinate the excavation, transportation & disposal of over 60,000 tons of urban fill, hazardous waste and CT-regulated soil in order to facilitate the construction of a new inner city development.

On behalf of this customer Berkshire has performed the following tasks:

- Develop a Site Specific Health & Safety Plan
- Collect Characterization Samples, Review & Interpret Results
- Coordinate Transportation & Disposal Services
- Compile Disposal Reconciliation Logs



**Soil Excavation,
Transportation
& Disposal /
De-watering**

Client: Confidential	Location: Science Park, New Haven, CT
Project Value: \$2,475,000	Project Status: Completed On Time & On Budget

Soil Excavation, Transportation & Disposal / De-watering

Berkshire was retained to coordinate the excavation, and subsequent de-watering activities at a new building construction project. Berkshire oversaw the disposal of approximately 30,000 tons of impacted soil during the two month de-watering process.

On behalf of this customer Berkshire has performed the following tasks:

- Develop a Site Specific Health & Safety Plan
- Collect Characterization Samples, Review & Interpret Results - Obtain Discharge Permits.
- Coordinate Transportation & Disposal Services
- Mobilize and Operate the De-watering System
- Compile Disposal Reconciliation Logs and De-watering Discharge Results



**Soil Excavation,
Transportation
& Disposal**

Client: Killingworth Middle School	Location: Killingworth, CT
Project Value: \$36,000	Project Status: Completed On Time & On Budget

Soil Excavation, Transportation & Disposal

Berkshire was retained to coordinate the excavation, transportation & disposal of polluted soil in order to facilitate the construction of a new middle school.

On behalf of this customer Berkshire has performed the following tasks:

- Develop a Site Specific Health & Safety Plan
- Collect Characterization Samples, Review & Interpret Results
- Coordinate Transportation & Disposal Services
- Compile Disposal Reconciliation Logs



**Soil Excavation,
Transportation
& Disposal**

Client: Confidential	Location: North Haven, CT
Project Value: \$1,100,000	Project Status: Completed On Time & On Budget

Soil Excavation, Transportation & Disposal

Berkshire was retained to coordinate the excavation, transportation & disposal of PCB-Impacted Soil. The remedial activities were performed in compliance with the EPA and CT DEEP approved the self implementing clean-up plan.

On behalf of this customer Berkshire has performed the following tasks:

- Develop a Site Specific Health & Safety Plan
- Collect Characterization Samples, Review & Interpret Results
- Coordinate Transportation & Disposal Services
- Oversee Compliance with EPA Approved Self Implementing Clean-Up
- Compile Disposal Reconciliation Logs



**UST Removal,
Soil Excavation,
Transportation
& Disposal**

Client: Confidential	Location: Bristol, CT
Project Value: \$30,000	Project Status: Completed On Time & On Budget

UST Removal, Soil Excavation, Transportation & Disposal

Berkshire was retained to oversee UST removal and delineate the boundaries of impacted soil at a former paint factory in Bristol, CT. Berkshire coordinated the excavation, transportation & disposal of impacted soil during the remediation process.

On behalf of this customer Berkshire has performed the following tasks:

- Develop a Site Specific Health & Safety Plan
- Collect Characterization Samples, Review & Interpret Results
- Coordinate Transportation & Disposal Services
- Compile Disposal Reconciliation Logs



**UST Removal,
Soil Excavation,
Transportation
& Disposal**

Client: Confidential	Location: Falls Village, CT
Project Value: \$7,000	Project Status: Completed On Time & On Budget

UST Removal, Soil Excavation, Transportation & Disposal

Berkshire was retained to provide oversight for the removal of a residential #2 fuel oil tank. Petroleum-impacted soil was excavated and properly disposed. The property was remediated under the protocol of CT DEEP guidance documents.

On behalf of this customer Berkshire has performed the following tasks:

- Develop a Site Specific Health & Safety Plan
- Collect UST Closure Samples, Review & Interpret Results
- Coordinate Transportation & Disposal Services
- Compile Disposal Reconciliation Logs



**Delineation
Investigation &
Remedial Action
Plan**

Client: Confidential

Location: Northwest Connecticut

Project Value: \$18,000

Project Status: Ongoing

Delineation Investigation and Remedial Action Plan

Berkshire was retained to oversee the removal of a heating fuel UST at a bank-owned commercial property. Additionally, Berkshire was retained to delineate the degree and extent of subsurface impacts, collect indoor air quality samples, and prepare a remedial action plan.

On behalf of this customer Berkshire has performed the following tasks:

- Develop a Site Specific Health & Safety Plan
- Advance Soil Borings, Collect Samples , Review & Interpret Results
- Collect Indoor Air Quality Samples, Conduct Well Receptor Survey
- Prepare Remedial Action Plan



**Delineation
Investigation &
Remedial Action
Plan**

Client: Confidential

Location: Kent, CT

Project Value: \$25,700

Project Status: Ongoing

Delineation Investigation & Remedial Action Plan

Berkshire was retained by an estate to evaluate the potential for an undocumented heating fuel UST at a residential property. Berkshire reviewed historic CT DEEP documentation and traced abandoned supply lines in the basement of the residence. Berkshire subsequently conducted subsurface investigations to evaluate conditions in the apparent UST grave, define the degree and extent of subsurface impacts, evaluate the potential for off-site impacts, sample potable wells, and prepare a remedial action plan.

On behalf of this customer Berkshire has performed the following tasks:

- Research and Investigate UST Documentation and Evidence
- Advance Soil Borings, Collect Samples, Review and Interpret Results
- Conduct a Well Receptor Survey and Collect Samples from Neighboring Potable Wells
- Remedial Action Plan Preparation



Free Product Recovery - Soil Vapor Extraction System Installation

Client: United Nations	Location: New York, New York
Project Value: \$29,000	Project Status: Completed On Time & On Budget

Free Product Recovery - Soil Vapor Extraction System Installation

Berkshire was retained to install all components associated with a free product recovery and soil vapor extraction system. Berkshire provided trained personnel, equipment, and materials to implement the system installation.

On behalf of this customer Berkshire has performed the following tasks:

- Attend Daily Security & Coordination Meetings
- Observe and Document Site Wide Activities
- Procure & Install System Components
- Develop Site Specific Health & Safety Plan
- Site Restoration Services



Retail Gasoline Station Upgrade Remediation System Retrofit

Client: Confidential	Location: Southern Connecticut
Project Value: \$18,500	Project Status: Completed On Time & On Budget

Retail Gasoline Station Upgrade - Remediation System Retrofit

Berkshire was retained to retrofit an existing remediation system and monitoring well network in conjunction with a retail gasoline station upgrade.

On behalf of this customer Berkshire has performed the following tasks:

- Design System Retrofit
- Install Subsurface Equipment
- Developed Site Specific Health & Safety Plan
- Provide Local Permitting Requirements



**Coastal
Management -
Beach Restoration
Muscat, Oman**

Client: Omani Government	Location: Azaiba Beach, Muscat, Oman
Project Value: \$500,000	Project Status: Completed On Time & On Budget

Coastal Management - Beach Restoration Project

Berkshire was retained to assist in the application of a proprietary beach restoration process. Berkshire provided trained personnel to implement all aspects of the field services provided.

On behalf of this customer Berkshire has performed the following tasks:

- Attend Daily Management Meetings
- Observe and Document Site Wide Activities
- Prepare Health & Safety Program
- Design and Fabricate Mixing and Delivery Systems
- Collect Sand and Groundwater Samples



**Coastal
Management -
Beach Restoration
St. Germain Sur-
Ay, France**

Client: French Government	Location: St. Germain Sur-Ay, France
Project Value: \$500,000	Project Status: Completed On Time & On Budget

Coastal Management - Beach Restoration Project

Berkshire was retained to assist in the application of a proprietary beach restoration process. Berkshire provided trained personnel to implement all aspects of the field services provided.

On behalf of this customer Berkshire has performed the following tasks:

- Observe and Document Site Wide Activities
- Prepare Health & Safety Program
- Design and Fabricate Mixing and Delivery Systems
- Collect Sand and Groundwater Samples



**Sodium
Permanganate
Injection**

Client: Confidential	Location: Enfield, CT
Project Value: \$26,000	Project Status: Completed On Time & On Budget

Sodium Permanganate Injection

Berkshire was retained to design and fabricate and operate a sodium permanganate (NaMnO₄) injection system to remediate chlorinated solvent impacts. Berkshire delivered over 4,000 gallons of 2% NaMnO₄ to the subsurface during this remediation process.

On behalf of this customer Berkshire has performed the following tasks:

- Develop a Site Specific Health & Safety Plan
- Design, Fabricate and Operate the Oxidant Delivery System
- Obtain Local Permits
- Monitor and Record Field Parameters



**Potassium
Permanganate
Injection**

Client: Confidential	Location: Hartford, CT
Project Value: \$76,000	Project Status: Completed On Time & On Budget

Potassium Permanganate Injection

Berkshire was retained to design and fabricate and operate a potassium permanganate (KMnO₄) injection system to remediate chlorinated solvent impacts. Berkshire delivered over 12,000 gallons of 2% KMnO₄ to the subsurface during this remediation process.

On behalf of this customer Berkshire has performed the following tasks:

- Develop a Site Specific Health & Safety Plan
- Environmental Drilling
- Design, Fabricate and Operate the Oxidant Delivery System.
- Obtain Local Permits
- Monitor and Record Field Parameters



**Potassium
Permanganate
Injection**

Client: Confidential	Location: Norwalk, CT
Project Value: \$69,000	Project Status: Completed On Time & On Budget

Potassium Permanganate Injection

Berkshire was retained to design and fabricate and operate a sodium permanganate (KMnO₄) injection system to remediate chlorinated solvent impacts. Berkshire delivered over 2,000 gallons of 2% KMnO₄ to the subsurface during this remediation process.

On behalf of this customer Berkshire has performed the following tasks:

- Develop a Site Specific Health & Safety Plan
- Design, Fabricate and Operate the Oxidant Delivery System
- Obtain Local Permits
- Monitor and Record Field Parameters



**Potassium
Permanganate
Injection**

Client: Confidential	Location: Middlebury, CT
Project Value: \$44,000	Project Status: Completed On Time & On Budget

Potassium Permanganate Injection

Berkshire was retained to design, fabricate and operate a potassium permanganate (KMnO₄) injection system to remediate chlorinated solvent impacts. Berkshire delivered over 8,000 gallons of 2% KMnO₄ to the subsurface during this remediation process.

On behalf of this customer Berkshire has performed the following tasks:

- Develop a Site Specific Health & Safety Plan
- Environmental Drilling
- Design, Fabricate and Operate the Oxidant Delivery System
- Obtain Local Permits
- Monitor and Record Field Parameters



**Potassium
Permanganate
Injection**

Client: Confidential

Location: Fairfield, CT

Project Value: \$17,000

Project Status: Completed On Time & On Budget

Potassium Permanganate Injection

Berkshire was retained to design and fabricate and operate a sodium permanganate (KMnO₄) injection system to remediate chlorinated solvent impacts. Berkshire delivered 1,200 gallons of 2% KMnO₄ to the subsurface during this remediation process.

On behalf of this customer Berkshire has performed the following tasks:

- Develop a Site Specific Health & Safety Plan
- Design, Fabricate and Operate the Oxidant Delivery System
- Obtain Local Permits
- Monitor and Record Field Parameters



**Lactic Acid
Injection**

Client: Confidential

Location: Newtown, CT

Project Value: \$13,000

Project Status: Completed On Time & On Budget

Lactic Acid Injection

Berkshire was retained to design and fabricate and operate a lactic acid injection system to remediate chlorinated solvent impacts. Berkshire delivered over 5,000 gallons of lactic acid - soybean oil solution to the subsurface during this remediation process.

On behalf of this customer Berkshire has performed the following tasks:

- Develop a Site Specific Health & Safety Plan
- Design and Fabricate In-tank Anaerobic Environment
- Design, Fabricate and Operate the Oxidant Delivery System
- Obtain Local Permits
- Monitor and Record Field Parameters



**EPA Innovative
Technology
Demonstration -
Catalyzed Sodium
Persulfate Injection**

Client: Confidential	Location: Vernon, CT
Project Value: \$116,000	Project Status: Completed On Time & On Budget

EPA Innovative Technology Demonstration - Catalyzed Sodium Persulfate Injection

Berkshire was retained to operate a catalyzed sodium persulfate injection system as a part of an Environmental Protection Agency (EPA) innovative technology demonstration. Berkshire maintained the operation throughout the three month pilot process.

On behalf of this customer Berkshire has performed the following tasks:

- Environmental Drilling
- Develop a Site Specific Health & Safety Plan
- Design, Fabricate and Operate the Oxidant Delivery System
- Obtain Local Permits
- Monitor and Record Field Parameters



**ORC[®]
Injection**

Client: Confidential	Location: Danbury, CT
Project Value: \$36,000	Project Status: Completed On Time & On Budget

ORC[®] Injection

Berkshire was retained to install monitoring and injection wells at this active retail center. Additionally Berkshire injected over 900 pounds of ORC[®] as a slurry mix.

On behalf of this customer Berkshire has performed the following tasks:

- Develop a Site Specific Health & Safety Plan
- Environmental Drilling
- Develop Dosing Load Calculations
- Monitor and Record Field Parameters



HRC[®] Injection

Client: Confidential	Location: Bethel, CT
Project Value: \$47,000	Project Status: Completed On Time & On Budget

HRC[®] Injection

Berkshire was retained to inject HRC[®] to an existing fourteen (14) point injection well network. Berkshire also recorded field parameters during the injection process.

On behalf of this customer Berkshire has performed the following tasks:

- Develop a Site Specific Health & Safety Plan
- Provide all Necessary Injection and Decon Equipment
- Assist in Obtain Proper Permits
- Develop Calculation Loads
- Monitor and Record Field Parameters



HRC[®] Advanced Injection

Client: Confidential	Location: Pawcatuck, CT
Project Value: \$51,000	Project Status: Completed On Time & On Budget

HRC[®] Advanced Injection

Berkshire was retained to inject HRC[®] advanced at this active industrial facility. Berkshire also recorded field parameters during the injection process.

On behalf of this customer Berkshire has performed the following tasks:

- Develop a Site Specific Health & Safety Plan
- Provide all Necessary Injection and Decon Equipment
- Assist in Obtaining Proper Permits
- Monitor and Record Field Parameters



**Public Utility
Power Plant
Site Health &
Safety**

Client: Public Utility Power Plant	Location: Bridgeport, CT
Project Value: \$18,500	Project Status: Completed On Time & On Budget

Public Utility Power Plant - Site Health & Safety

Berkshire was retained to assist in health & safety oversight at this coal fired power plant. Berkshire provided trained personnel to implement existing health and safety policies during the scheduled two week outage & maintenance program.

On behalf of this customer Berkshire has performed the following tasks:

- Attend Daily Management Meetings
- Observe and Document Plant Wide Activities
- Prepare Daily Reports
- Post & Track Required Permits Throughout the Plant
- Participate in Plant Personnel Training



**Public Utility -
Power Conversion
Station
Facility
Management**

Client: Public Utility - Power Conversion Station	Location: Long Island, NY
Project Value: \$2,500	Project Status: Completed On Time & On Budget

Public Utility - Power Conversion Station - Facility Management

Berkshire was retained to perform storm water sample collection. Berkshire also developed a stormwater treatment option as a cost savings measure at the power conversion station.

On behalf of this customer Berkshire has performed the following tasks:

- Perform Groundwater & Stormwater Sampling
- Review Analytical Data
- Developed a More Cost Effective Storm Water Treatment Method
- Provide Local Permitting Requirements



Regulatory Assistance

Client: Confidential	Location: Berlin, CT
Project Value: \$5,000	Project Status: Completed On Time & On Budget

Regulatory Assistance

Berkshire was retained to assist the owner of a parcel of land containing various 55-gallon drums and a pile of casting sand with hazardous concentrations of lead in negotiating a Consent Order with the CT DEEP.

On behalf of this customer Berkshire has performed the following tasks:

- Negotiated a Consent Order
- Prepared a detailed Remedial Action Plan
- Obtained CT DEEP approval of the Remedial Action Plan
- Assisted in obtaining bids for remedial activities



Regulatory Assistance

Client: Confidential	Location: Central, CT
Project Value: \$29,000	Project Status: Completed On Time & On Budget

Regulatory Assistance

Berkshire was retained to prepare a response to a Notice of Violation resulting from improper storage of hazardous waste. Berkshire is currently overseeing hazardous waste compliance, and personnel training program.

On behalf of this customer Berkshire has performed the following tasks:

- Perform site inventory & hazardous waste determination
- Introduced personnel training program
- Coordinated proper disposal of all On-site hazardous wastes
- Provide assistance for negotiations with the state & federal regulatory agencies



Regulatory Assistance

Client: Confidential	Location: Northwestern, CT
Project Value: \$14,000	Project Status: Ongoing

Regulatory Assistance

Berkshire was retained to prepare a renewal application for operation of a Volume Reduction Plant for processing clean wood.

On behalf of this customer Berkshire has performed the following tasks:

- Prepared a Volume Reduction Plant Permit Renewal Application
- Prepared a Spill Prevention, Control, and Countermeasure Plan
- Reviewed Stormwater Pollution Prevention Plan
- Collected annual stormwater samples



Regulatory Assistance

Client: Confidential	Location: Northwestern, CT
Project Value: \$72,000	Project Status: Ongoing

Regulatory Assistance

Berkshire was retained to provide consulting services relative to excavation of an un-permitted solid waste disposal area.

On behalf of this customer Berkshire has performed the following tasks:

- Collected soil characterization samples for laboratory analysis
- Oversaw excavation and off-site disposal of solid waste
- Correspondence with the CT DEEP relative to on-going site activities
- Assist with off-site disposal of residual soil stockpiles



Third Party Review

Client: Confidential	Location: Stamford, CT
Project Value: \$10,000	Project Status: Completed On Time & On Budget

Third Party Review

Berkshire was retained by a property owner to review and oversee investigation and remedial activities conducted by a former property owner who retained responsibility for environmental impacts to the Site.

On behalf of this customer Berkshire has performed the following tasks:

- Reviewed reports and work plans prepared by the responsible party.
- Witnessed subsurface investigation activities.
- Witnessed the removal of previously undocumented USTs
- Reviewed final reports prepared by the responsible party.



Third Party Review

Client: Confidential	Location: Branford, CT
Project Value: \$5,000	Project Status: Completed On Time & On Budget

Third Party Review

Berkshire was retained by the prospective purchaser of an industrial building to review existing environmental reports and advise on additional necessary investigation and remedial activities.

On behalf of this customer Berkshire has performed the following tasks:

- Reviewed existing environmental reports
- Interfaced with the seller's environmental consultant regarding additional work scopes
- Prepared a detailed letter outlining remaining areas of concern and further recommendations.



**UST Petroleum
Clean-Up Fund
Reimbursement**

Client: Confidential	Location: Shelton, CT
Project Value: \$15,000	Project Status: Completed On Time & On Budget

UST Petroleum Clean-Up Fund Reimbursement

Berkshire was retained by the owner of a retail gasoline station property to prepare applications to the CT DEEP UST Petroleum Clean-Up Fund for costs associated with investigation, remedial actions, and the extension of a municipal water supply to neighboring homes with wells impacted by a release at the Site.

On behalf of this customer Berkshire has performed the following tasks:

- Prepared initial and supplemental reimbursement applications
- Represented the client before the Fund Board
- Interfaced with Fund staff, the client, and legal counsel regarding the eligibility of costs incurred
- Successfully assisted the client in obtaining reimbursement for over \$500,000 in costs



**UST Petroleum
Clean-Up Fund
Reimbursement**

Client: Confidential	Location: Connecticut
Project Value: \$480,000	Project Status: On-going

UST Petroleum Clean-Up Fund Reimbursement

Berkshire has been retained by the owner of a retail gasoline station to conduct remedial activities for soil and groundwater remediation at the Site. Berkshire has also been retained to prepare and submit applications to the CT DEEP UST Petroleum Clean-up fund for reimbursement of eligible remediation costs.

On behalf of this customer Berkshire has performed the following tasks:

- Attend Fund Board Meeting relative to a request to extend reimbursement of pre-authorized costs
- Correspond with the CT DEEP Petroleum Clean-Up Fund staff relative to eligibility of costs incurred
- Currently preparing pre-authorized cost and supplemental cost applications
- Correspond with the CT DEEP relative to a Stipulation for Judgment and Consent Order at the Site

APPENDIX B

Small Business Enterprise Certificate

State of Connecticut

Department of Administrative Services

Supplier Diversity Program



This Certifies

Berkshire Environmental Services & Technology, LLC.

214 East Elm Street Torrington CT 06790-5020

As a

Small Business Enterprise

June 10, 2017 through June 10, 2019

Owner(s): Francis Wright

Contact: Francis Wright

E-Mail: fwright@best-env.com

Telephone: (860) 482-6399 Ext:

FAX: (860) 482-1833

Web Address: www.best-env.com

****Affiliate Companies:**

Supplier Diversity

Carl J. Wilson

DAS Procurement Director

** A contractor awarded a contract or a portion of a contract under the set-aside program shall not subcontract with any person(s) with whom the contractor is affiliated.

APPENDIX C

Certificate of Insurance



CERTIFICATE OF LIABILITY INSURANCE

DATE (MM/DD/YYYY)

04/25/2019

THIS CERTIFICATE IS ISSUED AS A MATTER OF INFORMATION ONLY AND CONFERS NO RIGHTS UPON THE CERTIFICATE HOLDER. THIS CERTIFICATE DOES NOT AFFIRMATIVELY OR NEGATIVELY AMEND, EXTEND OR ALTER THE COVERAGE AFFORDED BY THE POLICIES BELOW. THIS CERTIFICATE OF INSURANCE DOES NOT CONSTITUTE A CONTRACT BETWEEN THE ISSUING INSURER(S), AUTHORIZED REPRESENTATIVE OR PRODUCER, AND THE CERTIFICATE HOLDER.

IMPORTANT: If the certificate holder is an ADDITIONAL INSURED, the policy(ies) must have ADDITIONAL INSURED provisions or be endorsed. If SUBROGATION IS WAIVED, subject to the terms and conditions of the policy, certain policies may require an endorsement. A statement on this certificate does not confer rights to the certificate holder in lieu of such endorsement(s).

PRODUCER Tangarone & Prelli 1760 Ellington Road South Windsor CT 06074		CONTACT NAME: Bridget Skahan PHONE (A/C, No, Ext): (860) 648-6330 E-MAIL ADDRESS: bskahan@newberryagency.com		FAX (A/C, No): (860) 644-7789	
INSURED Berkshire Environmental Services & Technology LLC PO Box 1976 214 E. Elm Street Torrington CT 06790		INSURER(S) AFFORDING COVERAGE			NAIC #
		INSURER A: Nautilus Ins Co			17370
		INSURER B: Ohio Security Insurance Co.			24082
		INSURER C: Nautilus Insurance Co			17370
		INSURER D: Star Insurance Company			18023
		INSURER E:			
		INSURER F:			

COVERAGES**CERTIFICATE NUMBER:** CL1921907179**REVISION NUMBER:**

THIS IS TO CERTIFY THAT THE POLICIES OF INSURANCE LISTED BELOW HAVE BEEN ISSUED TO THE INSURED NAMED ABOVE FOR THE POLICY PERIOD INDICATED. NOTWITHSTANDING ANY REQUIREMENT, TERM OR CONDITION OF ANY CONTRACT OR OTHER DOCUMENT WITH RESPECT TO WHICH THIS CERTIFICATE MAY BE ISSUED OR MAY PERTAIN, THE INSURANCE AFFORDED BY THE POLICIES DESCRIBED HEREIN IS SUBJECT TO ALL THE TERMS, EXCLUSIONS AND CONDITIONS OF SUCH POLICIES. LIMITS SHOWN MAY HAVE BEEN REDUCED BY PAID CLAIMS.

INSR LTR	TYPE OF INSURANCE	ADDL INSD	SUBR WVD	POLICY NUMBER	POLICY EFF (MM/DD/YYYY)	POLICY EXP (MM/DD/YYYY)	LIMITS	
A	<input checked="" type="checkbox"/> COMMERCIAL GENERAL LIABILITY			ECP2004408-17	01/04/2019	01/04/2020	EACH OCCURRENCE	\$ 2,000,000
	<input type="checkbox"/> CLAIMS-MADE <input checked="" type="checkbox"/> OCCUR						DAMAGE TO RENTED PREMISES (Ea occurrence)	\$ 100,000
	<input checked="" type="checkbox"/> Pollution Liability						MED EXP (Any one person)	\$ 5,000
	<input checked="" type="checkbox"/> Professional Liability						PERSONAL & ADV INJURY	\$ 2,000,000
	GEN'L AGGREGATE LIMIT APPLIES PER: <input checked="" type="checkbox"/> POLICY <input type="checkbox"/> PRO-JECT <input type="checkbox"/> LOC OTHER:						GENERAL AGGREGATE	\$ 2,000,000
						PRODUCTS - COMP/OP AGG	\$ 2,000,000	
							\$	
B	AUTOMOBILE LIABILITY			BAS59514728	02/15/2019	02/15/2020	COMBINED SINGLE LIMIT (Ea accident)	\$ 1,000,000
	<input type="checkbox"/> ANY AUTO						BODILY INJURY (Per person)	\$
	<input type="checkbox"/> OWNED AUTOS ONLY	<input checked="" type="checkbox"/> SCHEDULED AUTOS					BODILY INJURY (Per accident)	\$
	<input checked="" type="checkbox"/> HIRED AUTOS ONLY	<input checked="" type="checkbox"/> NON-OWNED AUTOS ONLY					PROPERTY DAMAGE (Per accident)	\$
	<input type="checkbox"/>	<input type="checkbox"/>					Medical payments	\$ 5,000
C	<input type="checkbox"/> UMBRELLA LIAB			FFX2011378-14	01/04/2019	01/04/2020	EACH OCCURRENCE	\$ 2,000,000
	<input checked="" type="checkbox"/> EXCESS LIAB	<input checked="" type="checkbox"/> OCCUR					AGGREGATE	\$ 2,000,000
	<input type="checkbox"/>	<input type="checkbox"/> CLAIMS-MADE						\$
	DED	RETENTION \$					\$	
D	WORKERS COMPENSATION AND EMPLOYERS' LIABILITY			WC0688218	09/27/2018	09/27/2019	<input checked="" type="checkbox"/> PER STATUTE	<input type="checkbox"/> OTH-ER
	ANY PROPRIETOR/PARTNER/EXECUTIVE OFFICER/MEMBER EXCLUDED? (Mandatory in NH)	Y/N					E.L. EACH ACCIDENT	\$ 500,000
	If yes, describe under DESCRIPTION OF OPERATIONS below	<input type="checkbox"/> Y	N/A				E.L. DISEASE - EA EMPLOYEE	\$ 500,000
							E.L. DISEASE - POLICY LIMIT	\$ 500,000
A	Pollution Liability			ECP2004408-17	01/04/2019	01/04/2020	Occurrence & Aggregate	2,000,000
	Professional Liability						Each Claim -Professional	2,000,000

DESCRIPTION OF OPERATIONS / LOCATIONS / VEHICLES (ACORD 101, Additional Remarks Schedule, may be attached if more space is required)

CERTIFICATE HOLDER**CANCELLATION**

Berkshire Environmental Services & Technology LLC 214 Elm Street Torrington CT 06790	SHOULD ANY OF THE ABOVE DESCRIBED POLICIES BE CANCELLED BEFORE THE EXPIRATION DATE THEREOF, NOTICE WILL BE DELIVERED IN ACCORDANCE WITH THE POLICY PROVISIONS.
	AUTHORIZED REPRESENTATIVE <i>Bridget Skahan</i>

© 1988-2015 ACORD CORPORATION. All rights reserved.